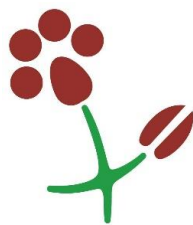




RISERVA NATURALE
MONTE RUFENO



COMUNE DI
ACQUAPENDENTE



The Sasseto Wood Natural Monument

**A balance of interests case study between
conservation and sustainable fruition**

Lazio – Italy

Filippo Belisario and Sabrina Di Francesco

The Sasseto Wood


60 hectares; Natura 2000 site (both SAC and SPA); protected area established by the Lazio Region linked with the bordering Monte Rufeno Nature Reserve

Historical century old wood very rarely cut, grown throughout time in a secluded position on a slope covered by volcanic boulders and stones collapsed from a high cliff

“Relict” of an ancient natural forest, almost intact, populated by several kinds of birds and little rodents and characterized by the presence of many species of trees: reservoir of biodiversity



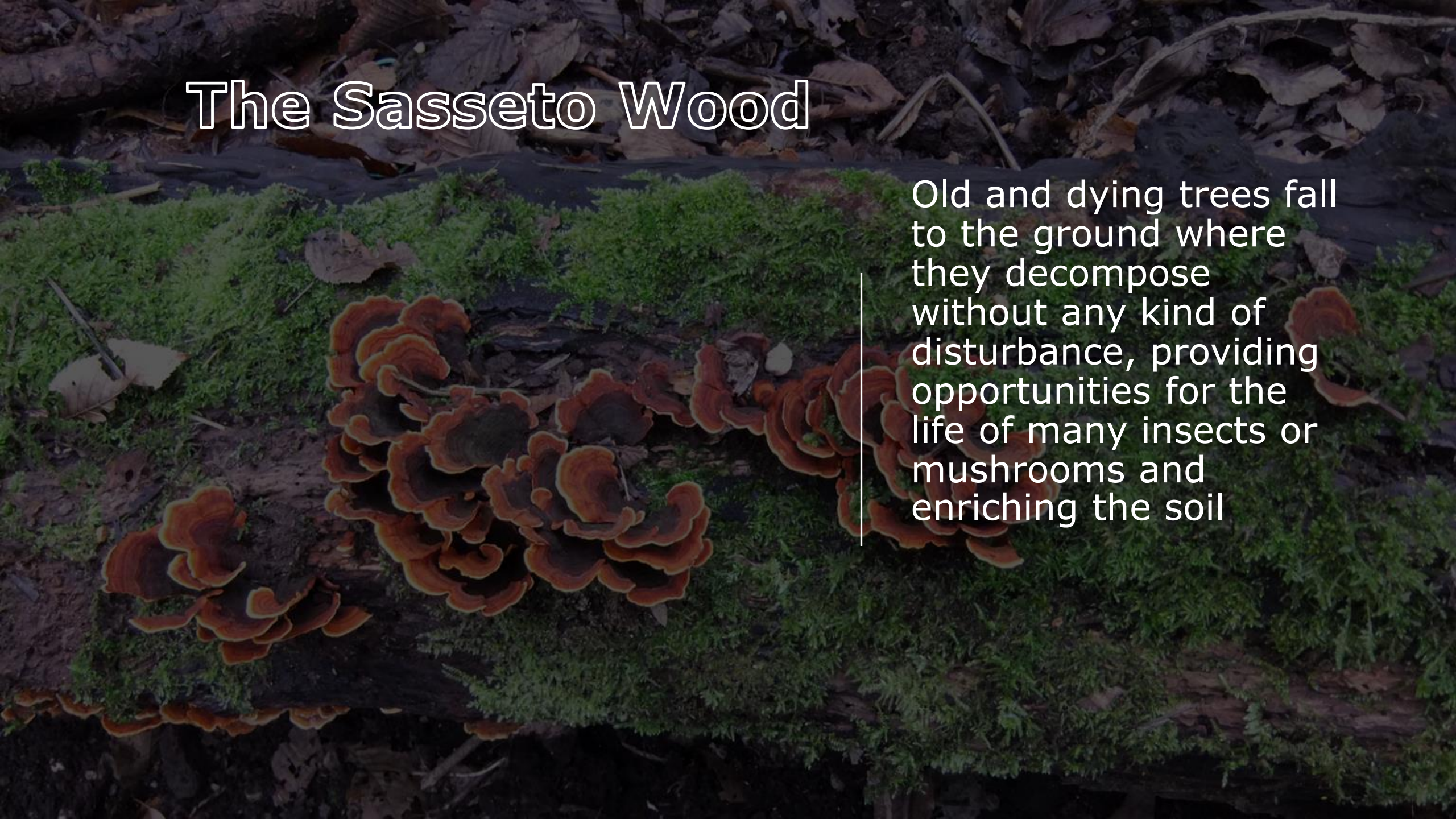
The Sasseto Wood

A photograph of a dense forest. A dirt path winds through the trees, which are surrounded by large, moss-covered rocks. The scene is lush and green, with sunlight filtering through the canopy.A photograph of a large, ornate stone monument, likely a grave, situated in a forest. The monument features a prominent pointed spire and intricate carvings. It is partially obscured by dense green foliage and trees.

Access through a network of paths and trails built at the end of the nineteenth century by a former owner, Edward Cahen, who loved the wood so much that he decided to place his future grave in it

The Sasseto Wood

Old and dying trees fall to the ground where they decompose without any kind of disturbance, providing opportunities for the life of many insects or mushrooms and enriching the soil



The wood becomes Natural Monument established by Lazio Region

2006

The Municipality of Acquapendente succeeds in an expropriation procedure of the wood as a "public interest area", thanks to its high nature, historic and cultural value together with its strong tourist potential

2010

The wood is part of the assets of a bankrupt due to financial trouble of its last owner

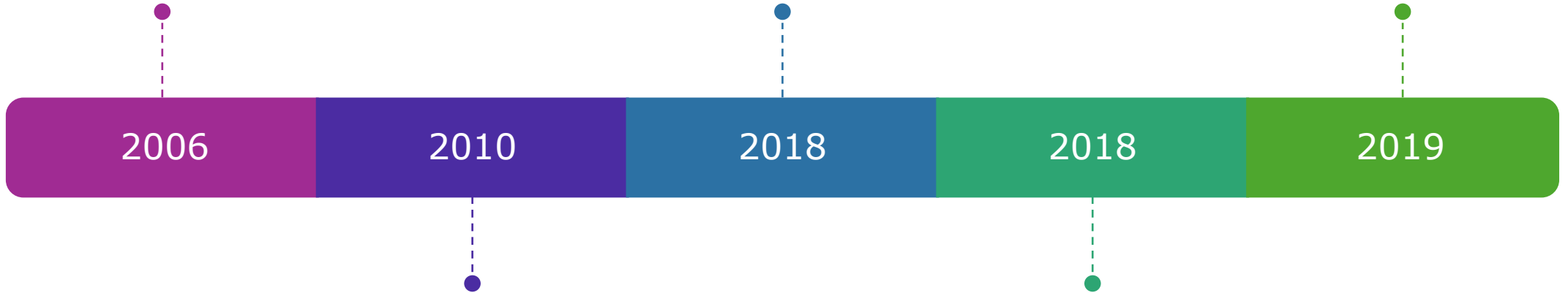
2018

Municipality approves a Regulation for the fruition of the wood

2018

Through a public call, Municipality assigns to a local enterprise the services for the public enjoyment of the wood

2019



The following services for the public enjoyment of the wood are assigned to a local enterprise:

```
graph TD; A[Ticket desk and booking] --> B[Guided visits]; B --> C[Additional services and events]; C --> D[Maintenance and control during opening days];
```

Ticket desk and booking

Guided visits

Additional services and events

Maintenance and control during opening days

Taking into consideration **priority conservation purposes**, Regulation includes several limitations to fruition such as:

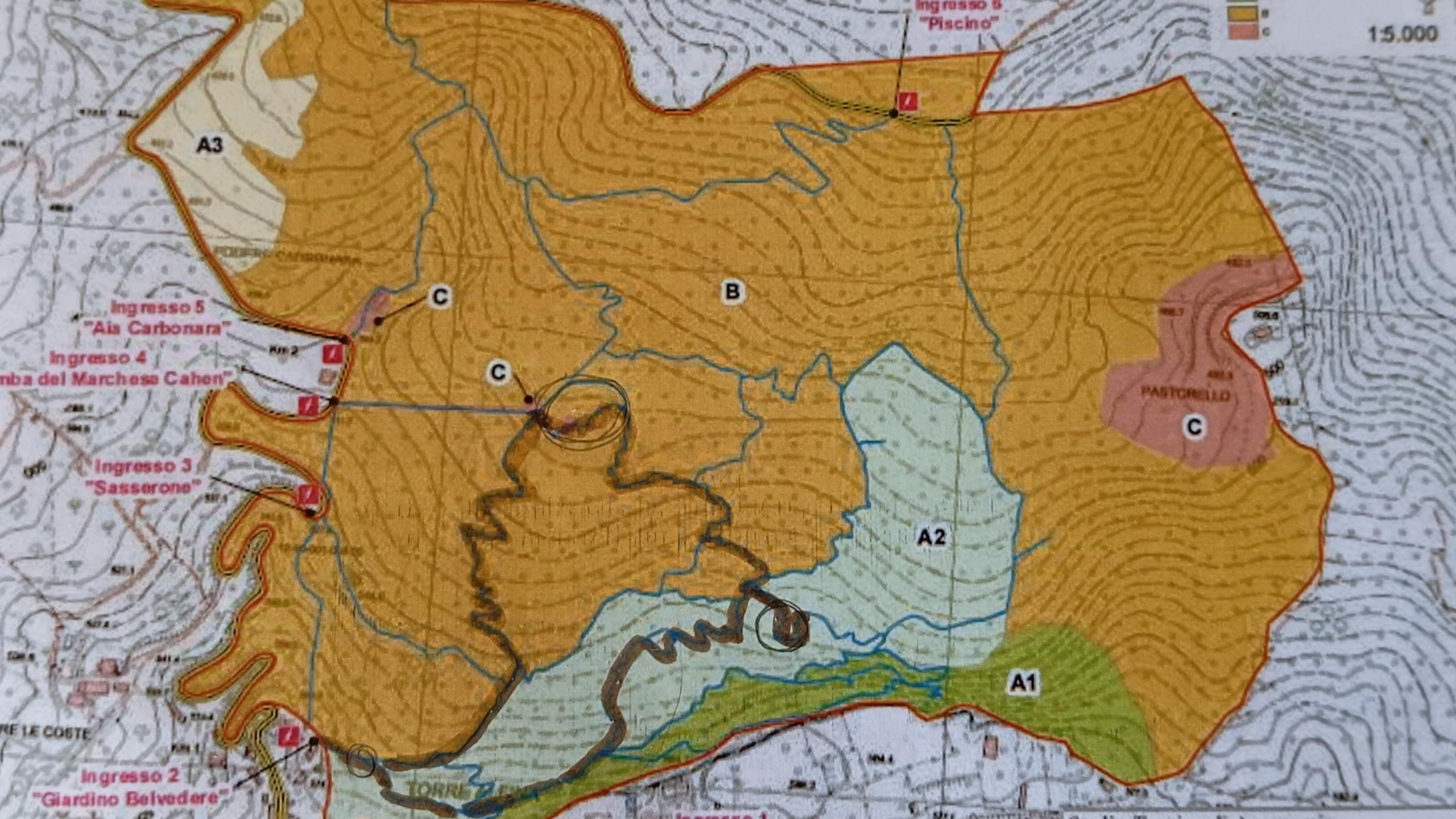
Access allowed only to guided groups accompanied by specifically trained guides or Monte Rufeno NR personnel

A single ring trail for visits and events, 2 kms long, involving only 15% of the surface of the site (around 10 hectares)

Maximum number of people present at the same time in the site is 120, divided into guided groups of maximum 30 people each

From March 15 to May 31, crucial period for bird nesting, maximum number of people present at the same time in the site is reduced to 90

Two days of complete closure: Mondays and Tuesdays



15.000

Ingresso 5
"Piscino"

A3

B

PASTORELLO

A2

A1

C

C

C

Ingresso 5
"Aia Carbonara"

Ingresso 4
"Cava del Marchese Cahen"

Ingresso 3
"Sasseroni"

Ingresso 2
"Giardino Belvedere"

LE COSTE

TORRE

Impact monitoring connected to visitor's presence is led through birds' listening stations methodology, mainly for species listed in EU 79/409 Directive such as Lesser spotted woodpecker (*Dryobates minor*) or Woodlark (*Lullula arborea*), but also for rare species such as Goshawk (*Accipiter gentilis*)



BENVENUTI al BOSCO MONUMENTALE del SASSETO

IL BOSCO MONUMENTALE DEL SASSETO RIENTRA TRA I SITI NATURA 2000 RICONOSCIUTI DALL'UNIONE EUROPEA ATTRAVERSO LA DIRETTIVA HABITAT 92/43/CEE (SIC/ZSC) E LA DIRETTIVA UCCELLI 79/409/CEEA (ZPS). QUESTO NE RICONOSCE L'ALTO VALORE NATURALISTICO NEL CONTESTO EUROPEO.

DAL 2006 È RICONOSCIUTO COME "MONUMENTO NATURALE" ED È INSERITO NEL SISTEMA DELLE AREE PROTETTE DELLA REGIONE LAZIO (D.P.G.R. T0167 DEL 11.05.2006).

QUELLO CHE RENDE UNICO IL SASSETO È LA PRESENZA DI TANTI ALBERI VETUSTI E MONUMENTALI, CRESCIUTI SU UN SUBSTRATO GEOLOGICO DI LAVÈ EFFUSE DALLA BOCCA DI UN ANTICO VULCANO. QUESTA SIMBIOSI TRA NATURA E GEOLOGIA FA DEL SASSETO UN LUOGO MAGICO E INCANTATO, UN BOSCO DA RISPETTARE E CONSERVARE PER LE FUTURE GENERAZIONI.



BOSCO MONUMENTALE DEL SASSETO IS ONE OF THE 2000 NATURA SITES RECOGNIZED BY THE EUROPEAN UNION THROUGH THE DIRECTIVE HABITAT 92/43 / EEC AND THE DIRECTIVE UCCELLI 79/409/EAEC. THESE DIRECTIVES ACKNOWLEDGE HIS HIGH NATURALISTIC VALUE IN THE EUROPEAN CONTEXT. SINCE 2006 IT HAS BEEN RECOGNIZED AS "NATURAL MONUMENT" AND IT HAS BEEN INCLUDED IN THE SYSTEM OF PROTECTED AREAS OF THE LAZIO REGION (D.P.G.R. T0167 DEL 11.05.2006).

THE CHARACTERISTIC THAT MAKES UNIQUE THE SASSETO IS THE PRESENCE OF MANY OLD AND MONUMENTAL TREES, GROWN ON A GEOLOGICAL SUBSTRATE OF AN ANCIENT VOLCANO. THIS SYMBIOSIS BETWEEN NATURE AND GEOLOGY MAKES THE SASSETO A MAGIC AND ENCHANTED PLACE, A WOODS TO RESPECT AND PRESERVE FOR THE FUTURE GENERATIONS.

NORME GENERALI DI COMPORTAMENTO DURANTE LE VISITE NEL BOSCO DEL SASSETO NON SI DEVE:

- 1) PARLARE AD ALTA VOCE O GRIDARE O PRODURRE RUMORI MOLESTI
- 2) FUMARE
- 3) ABBANDONARE RIFIUTI
- 4) DANNEGGIARE ALBERI E ARBUSTI
- 5) DANNEGGIARE E/O RACCOGLIERE TUTTE LE ALTRE SPECIE VEGETALI
- 6) DISTURBARE, CATTURARE O UCCIDERE OGNI TIPO DI FAUNA
- 7) DANNEGGIARE E/O ASPORTARE MINERALI E/O FOSSILI
- 8) ACCENDERE FUOCHI
- 9) INTRODURRE ARMI, ESPLOSIVI E QUALSIASI MEZZO DISTRUTTIVO O DI CATTURA, SE NON AUTORIZZATI
- 10) CONDURRE ANIMALI DOMESTICI CHE NON SIANO AL GUINZAGLIO
- 11) CIRCOLARE AL DI FUORI DELLA VIABILITÀ ORDINARIA O DEI SENTIERI ATTREZZATI SENZA AUTORIZZAZIONE
- 12) TRANSITARE O SOSTARE CON QUALSIASI VEICOLO SENZA AUTORIZZAZIONE
- 13) CIRCOLARE O SOSTARE SENZA BIGLIETTO D'INGRESSO E/O FUORI DELL'ORARIO CONSENTITO E SENZA SERVIZIO DI ACCOMPAGNAMENTO
- 14) CAMPEGGIARE
- 15) EFFETTUARE PIC-NIC E BIVACCHI DI OGNI TIPO
- 16) ESEGUIRE FOTO, FILMATI, RIPRESE CINEMATOGRAFICHE PER FINI PROFESSIONALI SENZA AUTORIZZAZIONE
- 17) ALTERARE CON SCRITTE, VERNICI, CORPI ABRASIVI O CONTUNDENTI I BENI E LE STRUTTURE ESISTENTI
- 18) LANCIARE PIETRE O QUALSIASI ALTRO OGGETTO CHE POSSA RECARE DANNO ALLE PERSONE, ALLE COSE ALL'AMBIENTE CIRCOSTANTE ED ALLA FAUNA
- 19) RACCOGLIERE FUNGHI EPIGEI E PRODOTTI DEL SOTTOBOSCO DI CUI ALLA L.R. N. 32 DEL 05.08.1998

GENERAL RULES OF CONDUCT IT IS STRICTLY PROHIBITED:

- 1) BEHAVING IN AN OFFENSIVE, IMPROPER, INDECENT OR DISORDERLY MANNER INCLUDING THE PLAYING ANY RADIO, OR IN ANY WAY CAUSE OF ANY NOISE IN ANY MANNER LIKELY TO DISTURB ANY SPECIES OR SPECIMEN OR OTHER PERSON
- 2) SMOKING
- 3) REMOVING PLANTS, ANIMALS, WILDLIFE, MINERALS OR FOSSILS OR ANY NATURAL OR CULTURAL ITEMS. TO CUT, DAMAGE, DESTROY OR BE IN POSSESSION OF ANY PLANT OR PART THEREOF, INCLUDING DRY WOOD OR FIREWOOD IS A SERIOUS OFFENCE
- 4) POACHING AND KILLING OR INJURING ANIMALS IS STRICTLY PROHIBITED
- 5) STARTING OR CAUSING OF ANY FIRE, WHETHER IT BE INTENTIONAL OR UNINTENTIONAL IS STRICTLY PROHIBITED
- 6) INTRODUCING WEAPONS, EXPLOSIVES AND ANY DISTRUCTIVE OR CATCHING MEANS, IF NOT AUTHORIZED
- 7) BRINGING PETS WITHOUT LEASH
- 8) WALKING OUT OF ORDINARY ROUTES WITHOUT AUTHORIZATION.
- 9) TRANSITING WITH ANY VEHICLE WITHOUT AUTHORIZATION
- 10) ENTERING THE WOODS WITHOUT ENTRY TICKETS AND / OR OUTSIDE THE VISITING HOURS AND WITHOUT AN ACCOMPANYING SERVICE
- 11) CAMPING
- 12) MAKING PIC-NIC
- 13) TAKING PHOTOS AND FILMING FOR PROFESSIONAL PURPOSES WITHOUT AUTHORIZATION
- 14) WRECKING WITH SCRIPTS, PAINTINGS, ABRASIVE BODIES THE EXISTING STRUCTURES
- 15) LAUNCHING STONES OR ANY OTHER OBJECT THAT CAN DAMAGE PEOPLE, THINGS AND WILDLIFE.
- 16) COLLECT EPIGEAN MUSHROOMS AND UNDERWOOD PRODUCTS LISTED IN THE L.R. N. 32 05.08.1998.

PER LA VISITA IN QUESTO AMBIENTE NATURALE È OBBLIGATORIO UN ABBIGLIAMENTO IDONEO E CALZATURE CHIUSE E ANTISCIVOLO. IN CASO DI CONDIZIONI METEO AVVERSE NON SARÀ PERMESSO L'ACCESSO

TO VISIT THE WOODS, WE RECOMMEND A SUITABLE CLOTHING AND TREKKING SHOES. IN CASE OF ADVERSE WEATHER CONDITIONS, THE ACCESS WILL NOT BE PERMITTED.

BIGLIETTERIA BOSCO MONUMENTALE DEL SASSETO
PIAZZALE SANT'ANGELO 19 - TORRE ALFINA
TEL: 0763 719206
E-mail: boscodelsassetto@comunecacquapendente.it

prenotazioni
booking

MUSEO DEL FIORE - CENTRO VISITE COMUNE DI ACQUAPENDENTE
VIA TORRE JULIA DE JACOPO SNC - ACQUAPENDENTE
TEL: 0763 730065 - 0763 730246 - 388 8568841
NUMERO VERDE 800.411.834 (INTERNO ZERO) E-mail: eventi@laperegina.it



Special events at the Sasseto

Theatre
dramatizations

Creative readings



Bosco del Sasseto

Sassi da favola

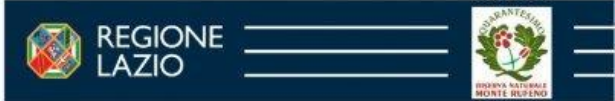
Il concorso di scrittura in Natura per ragazzi!

Nell'incantevole scenario del Bosco del Sasseto, ispirati dalle suggestioni magiche della Natura, potrete comporre sul vostro taccuino tutto ciò che il regno di fate e folletti vi solletterà

- SABATO**
12 AGOSTO 2023
- ORE**
17.30
- BOSCO DEL SASSETO**
Torre Alfina - Viterbo
- PRENOTAZIONI**
+39 388 8568841
Mail eventi@laperegina.it
- BIGLIETTO**
Costo €12,00/ragazzo e €6,00/accompagnatore



tutti gli eventi su parchilazio.it



Bosco del Sasseto

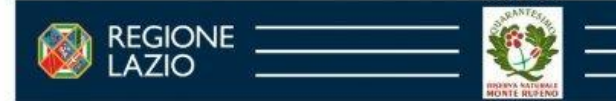
Caccia al tesoro con il brigante

Nell'incantevole scenario del Bosco del Sasseto, accompagnati da un insolito brigante, risolverete enigmi e superando prove, scoprirete il segreto celato dalla selva

- VENERDÌ**
18 AGOSTO 2023
- ORE**
17.30
- BOSCO DEL SASSETO**
Torre Alfina - Viterbo
- PRENOTAZIONI**
+39 388 8568841
Mail eventi@laperegina.it
- BIGLIETTO**
Costo € 10,00

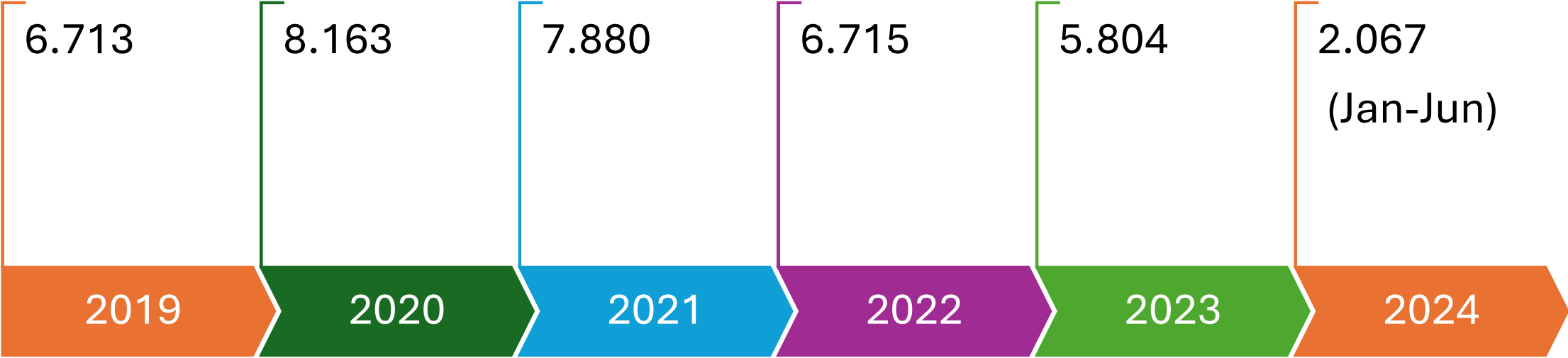


tutti gli eventi su parchilazio.it





Visitors' flows throughout the years



- +
 - A presentation by Filippo Belisario and Sabrina Di Francesco
- Monte Rufeno Nature Reserve
- Lazio Region

Photo credits by Filippo Belisario, Matteo Faggi, Elena Ronca, Coop L'Ape Regina

