



## VISIT US



Largo Luigi Fortunato,  
04022 Fondi (LT)  
wed-thu-fri-sat-sun

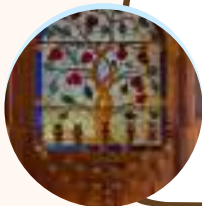


The conventual complex of Saint Dominic lies in the historical center of Fondi (LT), at the end of the alley "San Tommaso D'Aquino", that begins from the church of Saint Mary in the square.

It rises on the western side of the Roman Castrum and it embraces a stretch of the ancient walls of the city. Till 1997 the city hospital was hosted here.

Renovated with the aid of the Lazio Region, since 2019 is managed by the Natural Regional Park of Ausoni's mountains and Lake of Fondi.

## VISIT ALSO



### JEWISH MUSEUM



Largo Elio Toaff, 9a  
Fondi (LT)



500 m



### VILLA PLACITELLI



via Gegni, 1  
Fondi (LT)



2 km

## CONTACTS



Via Cavour 46, 04022 Fondi (LT)



0771513644



parcoausoni@regione.lazio.it

## FOLLOW US



parcoausoni



Parco Naturale Regionale  
Monti Ausoni e Lago di Fondi



www.parchilazio.it/montiausoni

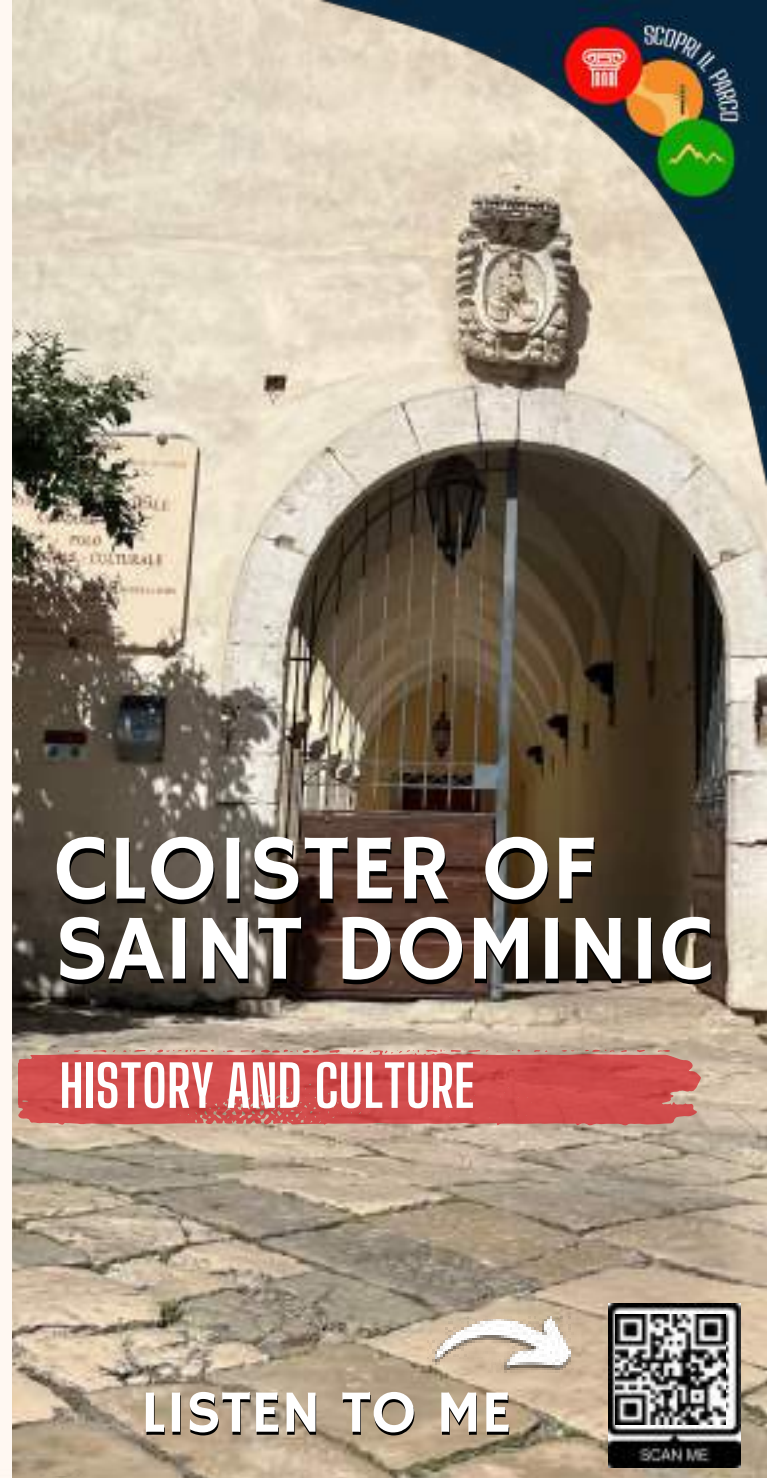


SCAN ME

Work made by the volunteers of the Universal Civil Service  
Coordination by Daniela di Fazio

Commissario Straordinario  
Giuseppe Incocciati

Direttore dell'Ente Parco  
Ermenio Corina



SCOPRI IL PARCO

# CLOISTER OF SAINT DOMINIC

## HISTORY AND CULTURE

## LISTEN TO ME



SCAN ME



REGIONE  
LAZIO

# A BIT OF HISTORY

The conventual complex of Saint Dominic rises on the old walls of the Roman Castrum of Fondi and it dates back at least in the X century. It's already mentioned in 935 A.D. when Fondi from duchy became county. Given to the Dominican brothers, it was restored in 1466 from Count Onorato II Caetani. In 1274 the complex guarded San Tommaso D'Aquino's remains, who used to pilgrim here often.

The square cloister, with the porch made of octagonal pillars (20, 3 are rounds) and pointed arches, encloses a small garden. The original church, later on changed in chapterhouse, it preserves gothic-catalan elements.

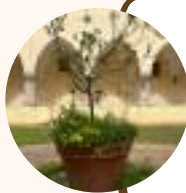
The architecture reflects the centuries of transformations from VII to XX.



## DID YOU KNOW...



### LEGEND



San Tommaso D'Aquino planted in the cloister a tree backwards to demonstrate that divine power would have made it grow even if upside down.

### HOSPITAL

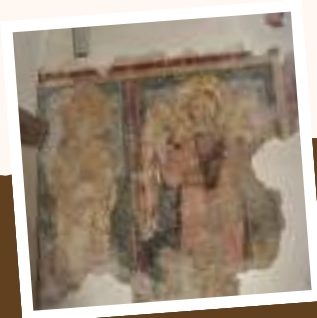


In 1830 the Spedalieri brothers of San Giovanni di Dio moved here their religious home and the hospital of Saint Mary of Sanity. It was the city hospital until 1997.

### CURIOSITY



The cinematic room realized in the complex, it's named after the director Carlo Lizzani, friend and collaborator of Giuseppe De Santis, known local director.



In the church it is possible to gaze upon the frescoes from XI to XIV century, that depicts San Michele Arcangelo and the dominican saints.



## SAINT THOMAS' CHURCH

The church of San Tommaso D'Aquino, opens on the cloister of the Complex of Saint Dominic in Fondi. Among the oldest in the area, it gave frequently hospitality to San Tommaso while he visited his sister Marlotta, wife to Ruggero dell'Aquila, Count of Fondi from 1214 to 1232.

The church is still used as of today for worship, it keeps very important frescoes that came to light during the restoration of 2004, by Lazio Region.

The frescoes follow the iconographic structure of San Magno's abbey, of benedictin origin, while on the chapel's walls adopts a style closer to dominican tradition.