



Mari



Mari



Mari

The Rivodutri beech tree is famous for its extraordinary shape, thanks to its branches that braid sinuously creating waves and knots of uncommon beauty.

In the whole world only two other examples of beeches are known that may be compared, for the shape and growth habit, to this century-old tree.

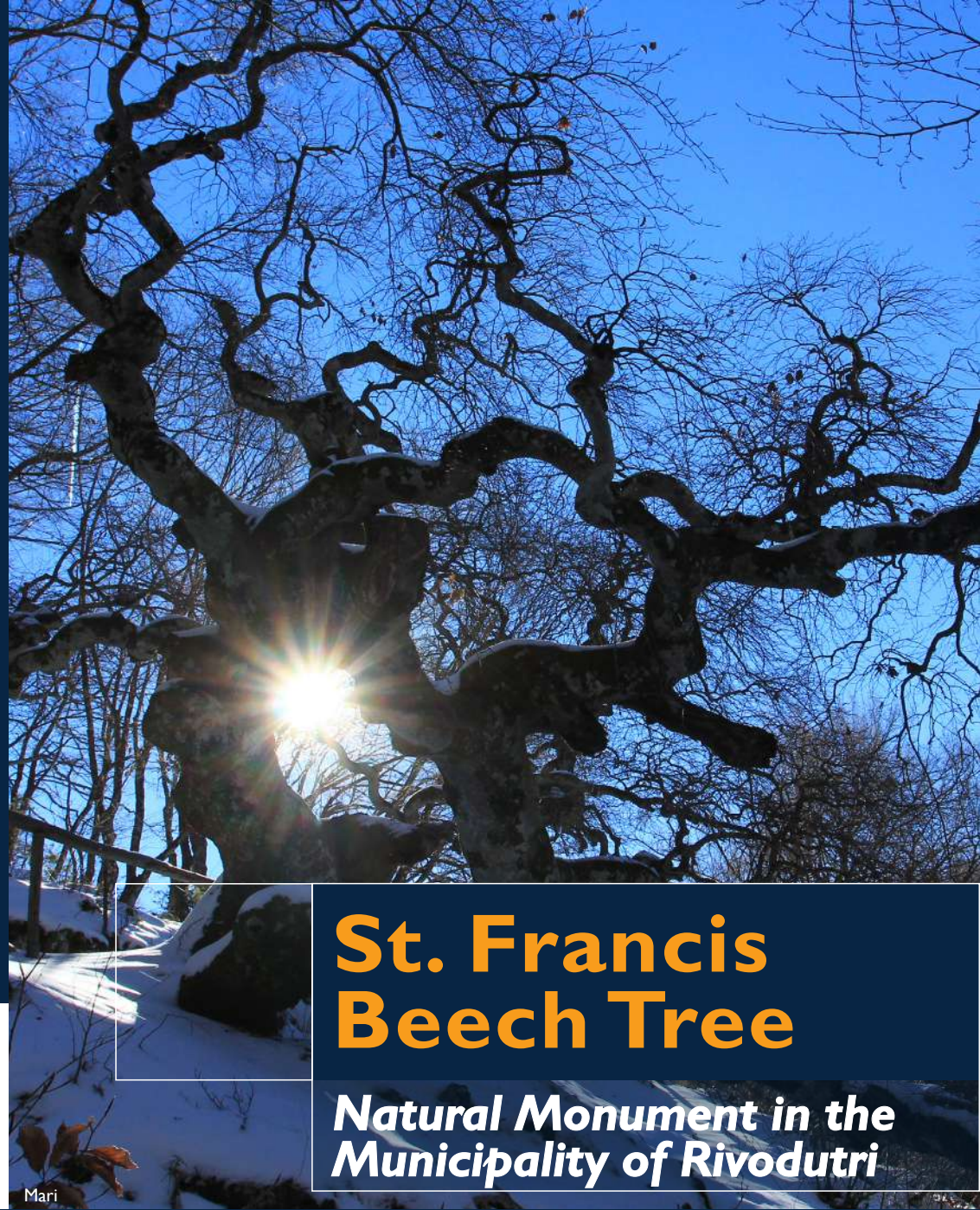
It's an imposing tree, with its 21 metres circumference, 7 metres diameter and 6 metres height.

Contrary to all the other beech trees, whose branches tend to grow towards the sky, the branches of this example naturally bend towards the ground, exactly like those of the weeping willow. In this way, the whole tree looks somehow like a hut and is also known as the "Hut of St. Francis".

Tradition states that once, at nightfall, since a storm was approaching, St. Francis decided to stop his path and sleep under the canopy of a beech tree that quickly bent its branches towards the ground to better protect the rest of the holy man.

Realized in December 2018 by the Lazio Region Parks and Protected Areas Departmen.

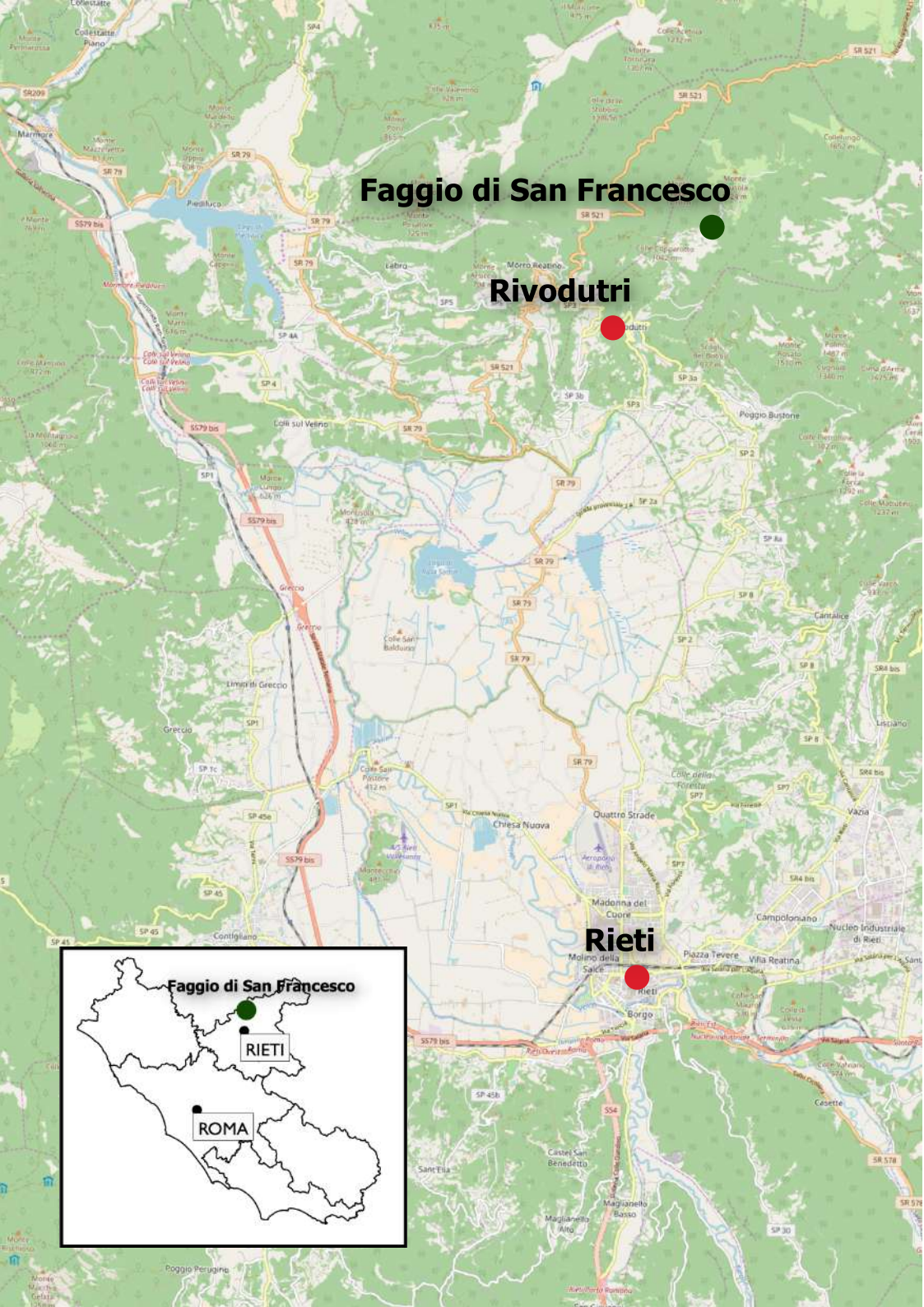
Viale del Tintoretto 432, Roma
direzioneamiente@regione.lazio.it
www.parchilazio.it



Mari

St. Francis Beech Tree

Natural Monument in the Municipality of Rivodutri



St. Francis Beech Tree symbol of a district with a deep history and a rich nature

The report of the peculiarities and features of the **Rivodutri** area turns into a long and fascinating journey through history, nature, tradition and culture of a very special valley: the **Valle Santa**.

This name comes from the most beloved Italian Saint, **Francis**, who was so in love with this valley that he chose it as a second home and stayed here for a long period of his life. Nowadays the territory is still enriched by many widespread evidences connected to his presence so that in our villages his memories and ideas are part of everyday life.

But Rivodutri displays also many other treasures.

The first is a fantastic landscape, that can be appreciated from the top of small hamlets built on natural terraces such as Rivodutri itself, or Apoleggia or Cepparo. Landscape appears here like a wide mosaic, a colour palette partly made by nature and partly by the **wise work of men that throughout centuries were able to sketch the weave of fields, trails, hedges and rows**. Nowadays we can only be delighted by these unique and precious views.

Then comes a rich and generous nature, fully displayed by the lakes, wetlands and reeds of the **Laghi Lungo and Ripasottile Nature**

Reserve. This protected area was established to remind us the aspect of the valley before its reclamation.

Furthermore, a long-time story, witnessed by watchtowers that stand out on the hilltops, old villages perched on the mountain slopes, ancient mills fed by plentiful water streams and springs. The most famous and abundant is the **Santa Susanna Source**, that has one of the highest flow-rates in Europe. Then come traditions, genuine food, olive oil, flour, cheese, wine produced in our fields and on our hills. And finally the main symbol of history, faith, culture and nature of our territory: **the Beech Tree**.

To hikers that walk up to the last bend of the trail this century-old tree looks like a miracle of nature. To the many worshippers that stop and pray in front of its powerful trunk it looks more like a miracle of God. For all it's simply **the St. Francis Beech Tree, the symbol of Rivodutri**.

With the aim of a better conservation, knowledge and appraisal, after the recognition of "Monumental Tree" appointed by the Italian Ministry of the Environment, now the area all around has also become one of the **Natural Monuments of the Lazio Region**.

Barbara Pelagotti, Major of Rivodutri